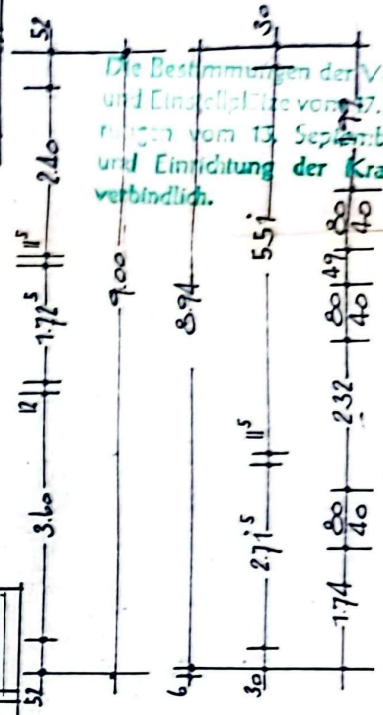
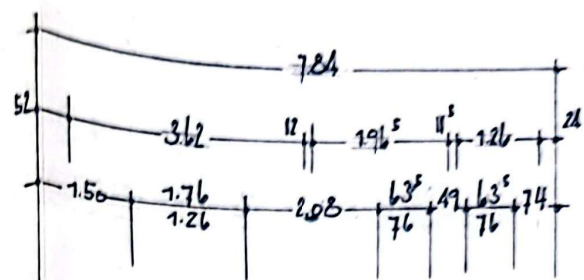
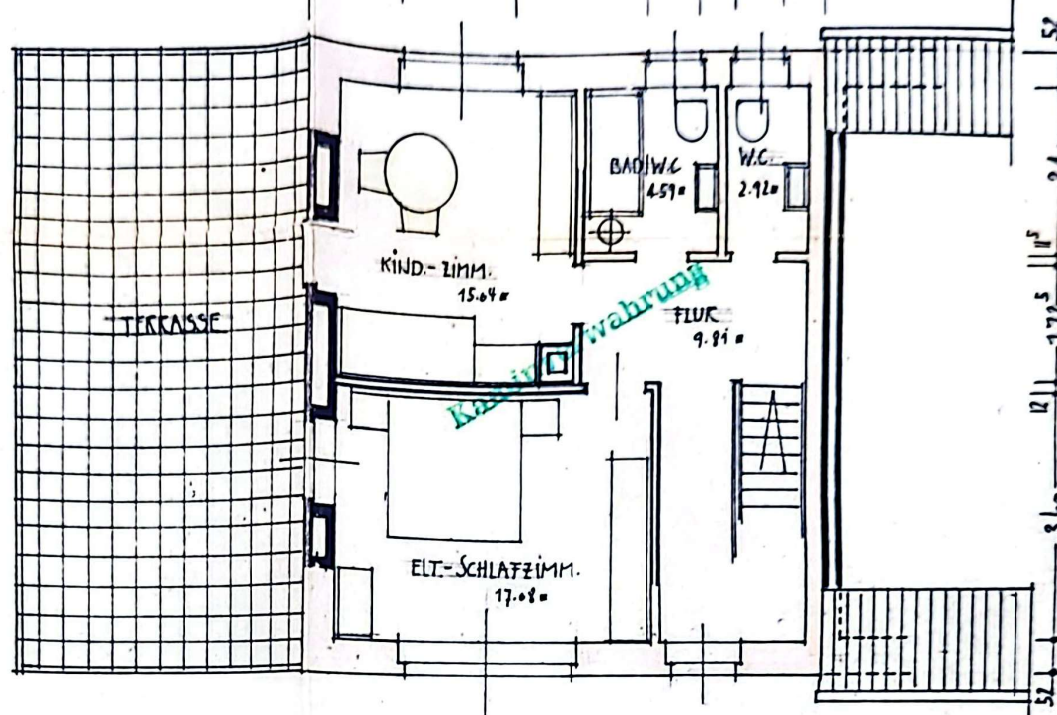
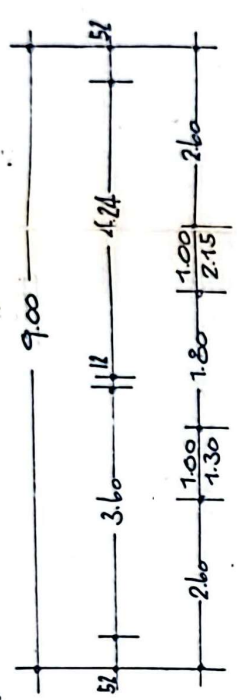
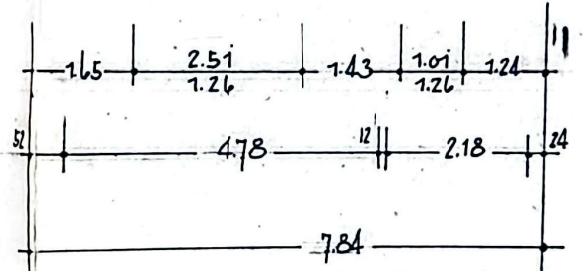


Erdgeschoss



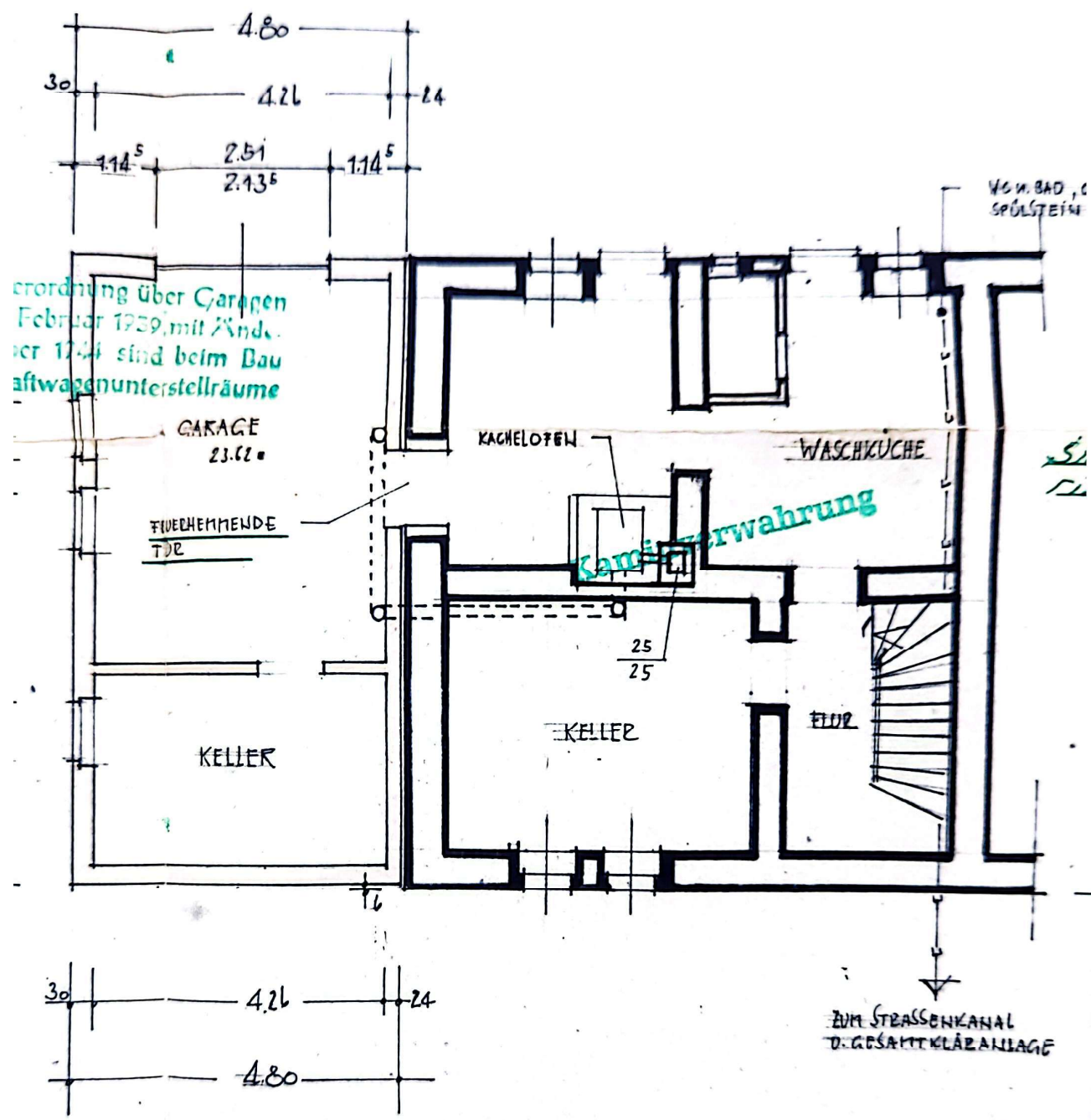
Die Bestimmungen der Verordnung und Einstellplätze vom 27. Februar 1977 und vom 13. September 1977 und Einrichtung der Kraftwagen verbindlich.



HAUEN MASSE SIND T U. STELLE ZU NEHMEN

OBERGESCHOSS

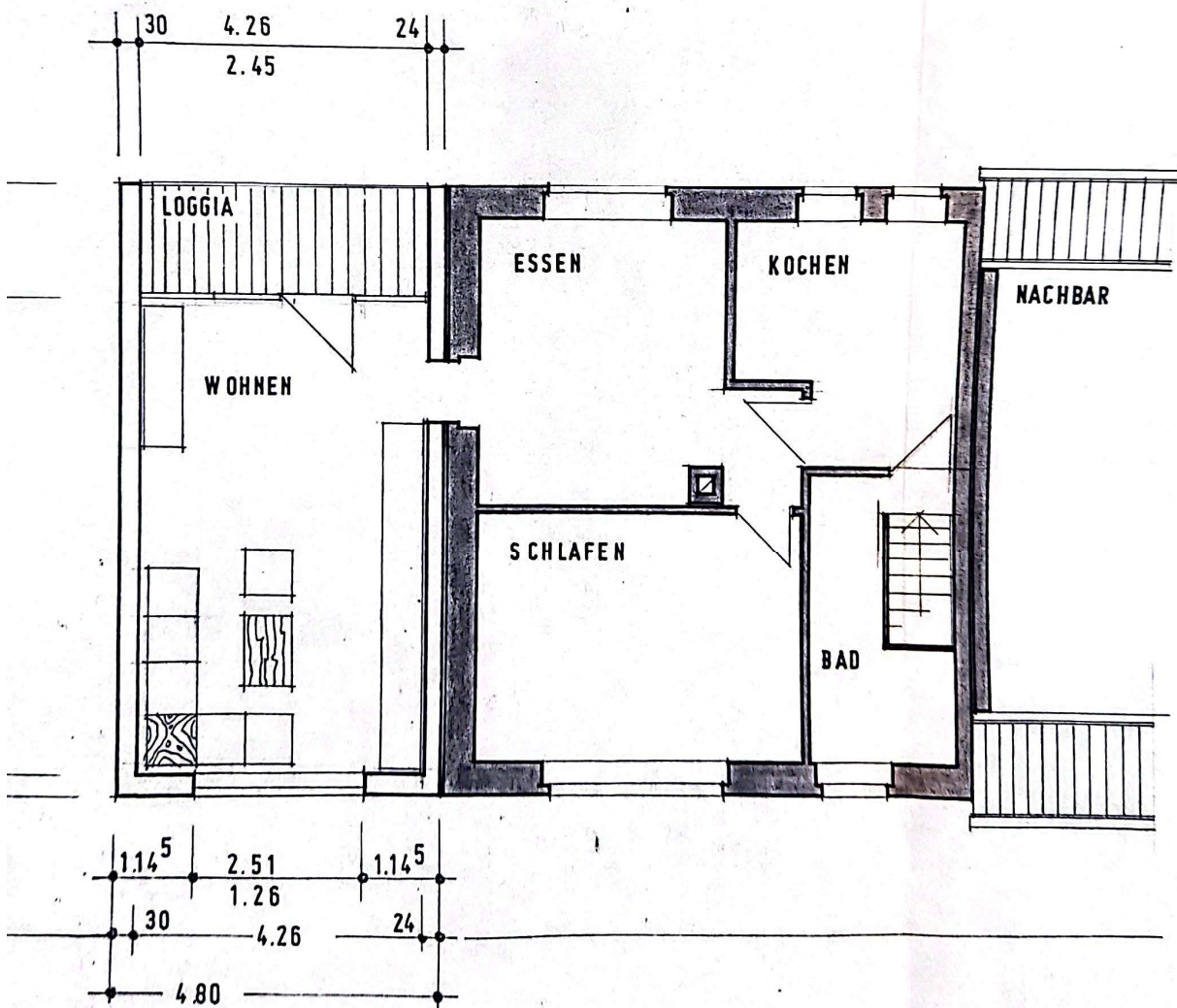
KU



KELLERGESCHOSS

NACHBAR

STRASSESEITE



OBERGESCHOSS